



Nicaragua

Earthquake

12 July 2020

Final Event Briefing

22 July 2020

1 INTRODUCTION

A magnitude 5.4 earthquake occurred at 22:38:43 UTC on 12 July 2020, 6.4 km (4 mi) W of El Crucero, Nicaragua; 18.1 km (11.3 mi) S of Ciudad Sandino, Nicaragua and 18.3 km (11.4 mi) NNE of San Rafael del Sur, Nicaragua. Estimates from the United States Geological Survey (USGS) located the epicentre of the event at 11.998°N, 86.368°W, and at a depth of 158.8 km (98.7 mi) – Figure 1. Nicaragua was the only CCRIF member country where peak ground acceleration, computed with the CCRIF SPHERA model, was greater than 0.01 g for this earthquake.

Final runs of CCRIF’s loss model estimated no government losses for Nicaragua and therefore no payout is due.

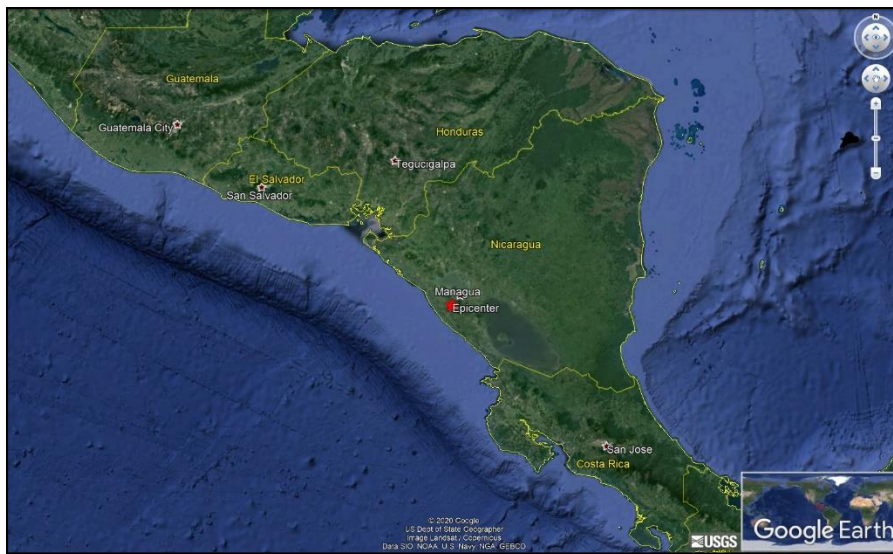


Figure 1 Information from the Earthquake Hazards Program of the United States Geological Survey regarding the earthquake event on 12 July 2020 at 22:38:43 UTC. Source: USGS¹

2 CCRIF MODEL OUTPUTS

Under CCRIF’s loss calculation protocol, a report using the CCRIF System for Probabilistic Hazard Evaluation and Risk Assessment (SPHERA) is produced for any earthquake with a magnitude greater than or equal to 5.0 that occurs within the region monitored by CCRIF and which generates a peak ground acceleration of at least 0.01g in one or more grid cells of at least one CCRIF member country. Based on the SPHERA footprint for this earthquake, peak ground acceleration between 0.005 g and 0.05 g was estimated in the territory of Nicaragua (Figure 2), but under SPHERA the earthquake generated a loss estimation of zero.

¹ Download Event KML, United States Geological Survey, review date: 22 July 2020, available at: <https://earthquake.usgs.gov/earthquakes/eventpage/us7000amh4/executive>

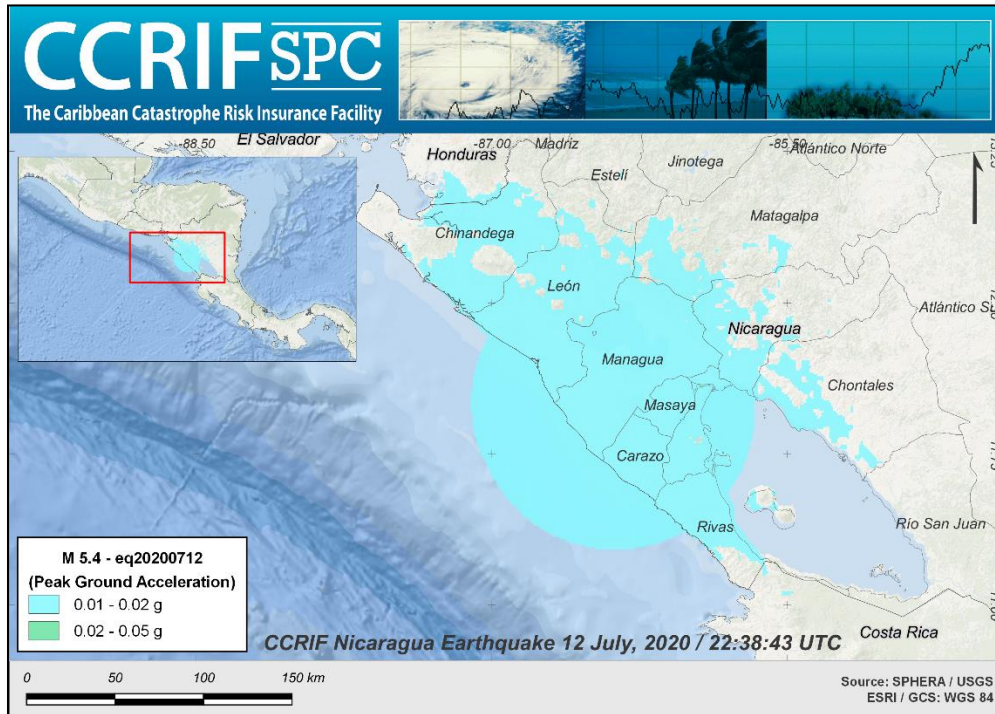


Figure 2 Map showing the peak ground acceleration in Nicaragua computed using SPHERA model following the magnitude 5.4 earthquake on 12 July 2020 at 22:38:43 UTC. Source: *USGS & CCRIF SPHERA EQ Model*.

3 IMPACTS

Ten days after the earthquake’s occurrence, no information was available related to damages or losses in Nicaragua due to this earthquake.

According to the USGS “*Did You Feel It?*” online tool², in Nicaragua within a radius of 187 km (116.2 mi) from the epicentre, 6 persons reported the earthquake as feeling as a “weak shake with no damage” (Mercalli intensities: II to III).

4 TRIGGER POTENTIAL

Final runs of CCRIF’s loss model generated no government losses for Nicaragua for this earthquake and therefore no payout is due under Nicaragua’s CCRIF policy for earthquake.

For additional information, please contact CCRIF SPC at: pr@ccrif.org

² Did You Feel It?, United States Geological Survey, review date: 22 July 2020, available at: <https://earthquake.usgs.gov/earthquakes/eventpage/us7000amh4/dyfi/responses>