



# Nicaragua

## Earthquake

**13 November 2017**

## Event Briefing

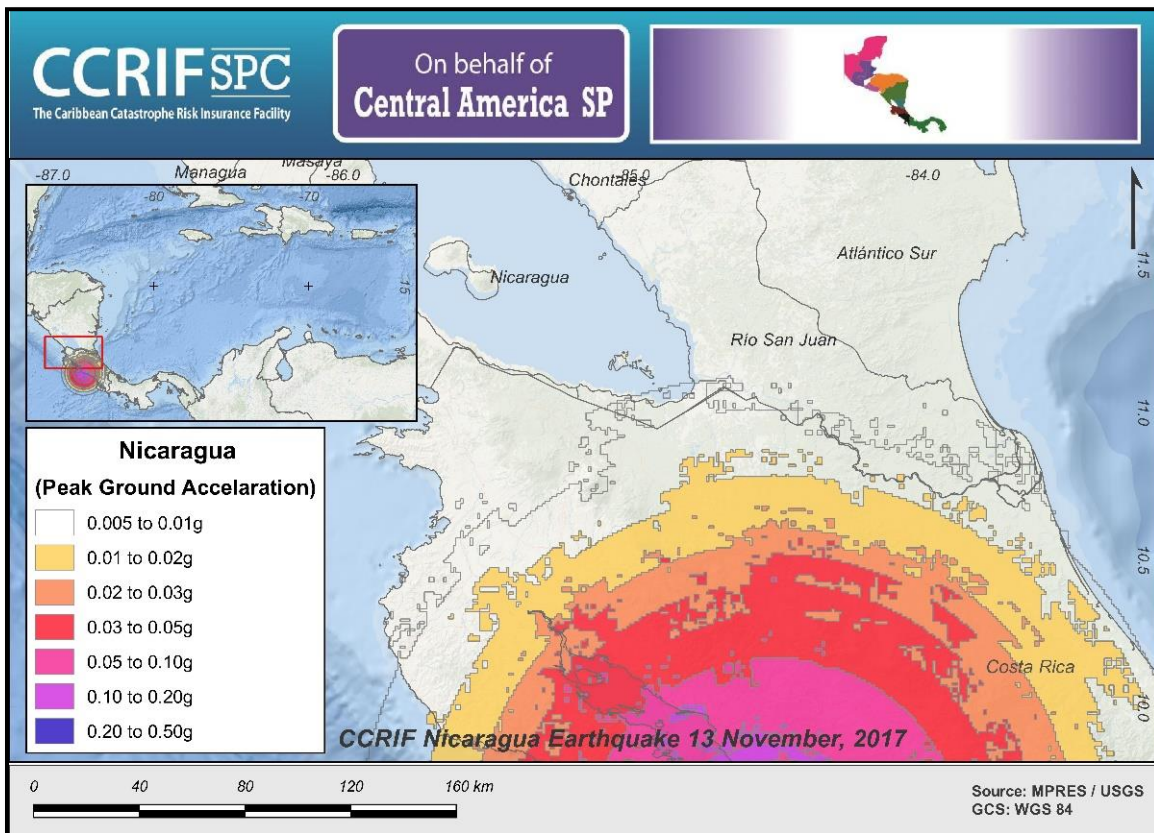
**14 November 2017**

## 1 INTRODUCTION

A magnitude 6.5 earthquake occurred at 02:28:24 UTC on 13 November 2017, (20:28:24 on 12 November, local time and date), 16.8 km (10.4 mi) SE of Jacó, Costa Rica; 38.5 km (23.9 mi) SW of Tejar, Costa Rica and 41.2 km (25.6 mi) SW of San Rafael Abajo, Costa Rica. Initial estimates from the United States Geological Survey (USGS) located the epicentre of the event at 9.526°N, 84.505°W, and at a depth of 19.8 km (12.3 mi). Nicaragua was the only CCRIF member country affected by the earthquake.

## 2 CCRIF MODEL OUTPUTS

Under CCRIF's loss calculation protocol, a CCRIF Multi-Peril Risk Estimation System (MPRES) report is required for any earthquake with a magnitude of greater than or equal to 5.0 that occurs within the region monitored by CCRIF and which generates a peak ground acceleration of at least 0.01 g in one or more grid cells of at least one member country. Based on the MPRES footprint for this earthquake, peak ground acceleration between 0.01g and 0.02g was estimated in the territory of Nicaragua, for which the loss estimation was zero (Figure 1).



**Figure 1** Map showing the peak ground acceleration in Nicaragua following the magnitude 6.5 earthquake on 13 November 2017. Source: USGS & CCRIF MPRES.

### **3 IMPACTS**

At the time of this report, information published in the regional media<sup>1</sup>, reported that the earthquake was felt in Panama and Nicaragua, but no damage was identified in these countries. There are no reports of damages and losses in Nicaragua due to this earthquake.

According to the USGS “Did You Feel It?” online tool<sup>2</sup>, in Nicaragua within a radius of 286 km (178 mi) of the epicentre, only three people reported the earthquake as a “weak shake with no damage” (Mercalli intensities: III).

### **4 TRIGGER POTENTIAL**

These reports corroborate preliminary runs of CCRIF’s loss model that generated no government losses for Nicaragua, and therefore no payout is due.

For further information, please contact ERN-RED, the CCRIF SPC Risk Management Specialist.

Evaluación de Riesgos Naturales  
Vito Alessio Robles No.179  
Col. Hda Gpe Chimalistac.  
Del. Álvaro Obregón. Cp 01050, México D.F.  
+52 (55) 5616-8161, 62, 64  
[cavelar@ccrif.org](mailto:cavelar@ccrif.org)

---

<sup>1</sup> National Association of Radio Distress-Signalling and Infocommunications (RSOE) Emergency and Disaster Information Service (EDIS), review date: 14 November 2017, available at: [hisz.rsoe.hu](http://hisz.rsoe.hu)

<sup>2</sup> Did You Feel It?, United States Geological Survey, review date: 14 November 2017, available at: <https://earthquake.usgs.gov/earthquakes/eventpage/us2000bmhe#dyfi>

---