

# **Tropical Cyclone Danielle (AL062010)**

## **Event Briefing**

*Caribbean Risk Managers Ltd  
Facility Supervisor*

**31 August 2010**



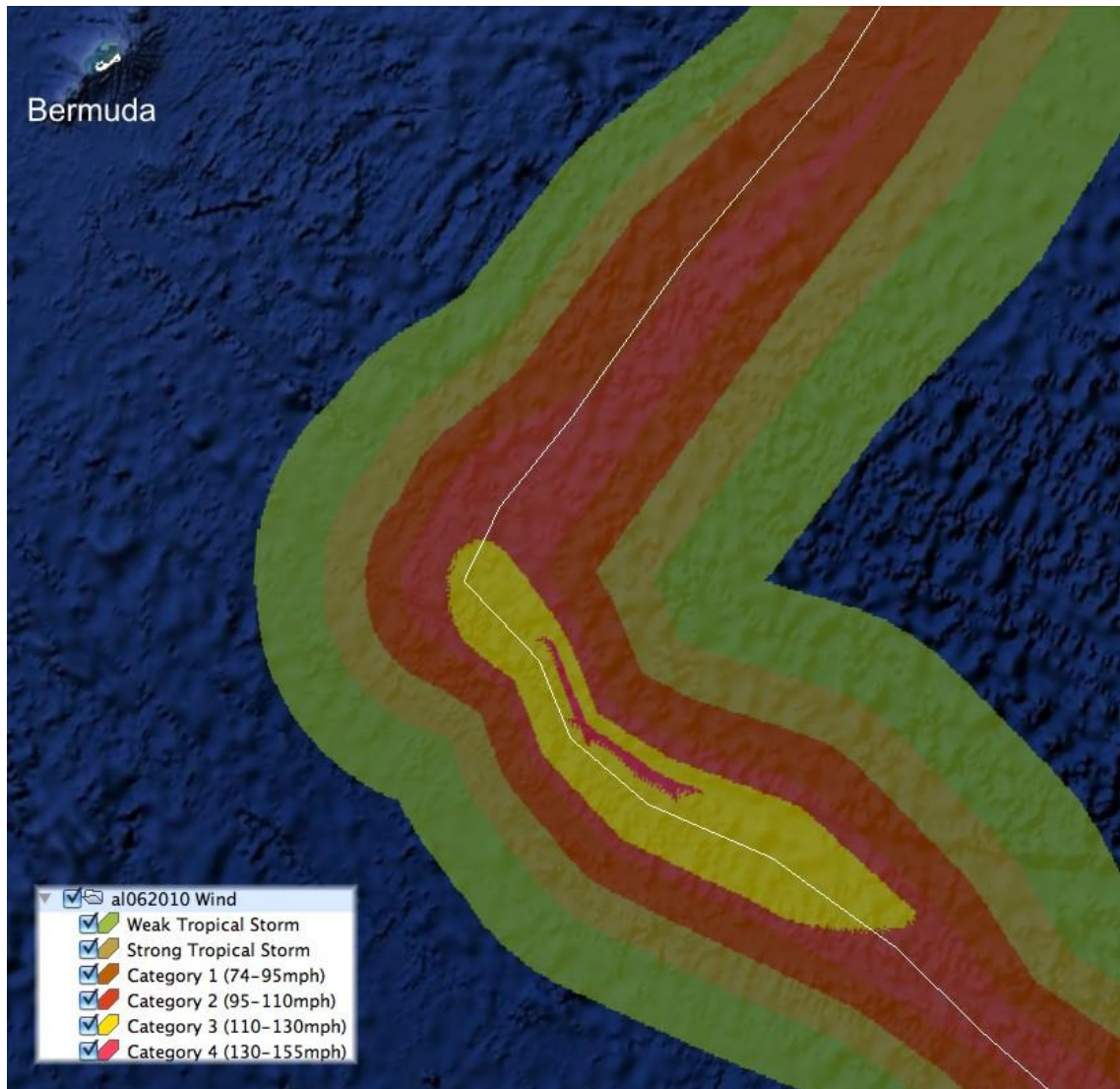
Facility Supervisor: Caribbean Risk Managers Ltd  
Email: [ccrif@ccrif.org](mailto:ccrif@ccrif.org); Main Tel (Barbados): +1 (246) 426-1525  
Tel (Jamaica): +1 (876) 920-4182; Tel (USA): +1 (202) 465-4301



## 1 SUMMARY

Tropical Cyclone Danielle started life as Tropical Depression Six on 21 August in the mid-Tropical Atlantic, becoming a Tropical Storm the following day and a Hurricane the day after that. Its track curved northwestwards well before nearing the eastern Caribbean and, after threatening Bermuda for a while, made an abrupt turn to the northeast and tracked well to the east of Bermuda. It attained Category 3 status on 27 August south of Bermuda, but gradually weakened and passed Bermuda as a weak Category 2 storm.

As shown in the wind footprint graphic below, Bermuda was well outside of the Tropical Storm force wind envelope, and the event therefore does not qualify as being an eligible event under the CCRIF Policy. As would be expected, the modelled loss from the event was zero.



## 2 COMPARISON OF MODELLED WIND FOOTPRINT

A comparison was made between the final published wind footprint from the National Hurricane Centre (which differentiates Tropical Storm and Hurricane force winds) and the equivalent produced by CCRIF's hazard/risk model based on KAC's TAOS modelling technology.

The graphic below shows the two outputs with identical colouring. As can be seen, the footprints are similar, although the NHC footprint is broader for Tropical Storm force winds throughout the track, with the KAC Hurricane wind footprint being slightly wider through much of early part of the track and the NHC Hurricane wind footprint broadening in the latter part of the track. Overall, however, the KAC model very successfully replicates the definitive wind speed record for the storm from NHC.

