



North Atlantic

Earthquake

20 April 2016

Event Briefing

21 April 2016

1 INTRODUCTION

A magnitude 5.8 earthquake occurred at 10:51:31 UTC (6:51:31 local time) on 20 April 2016, at 389 km (241.7 mi) E of Bathsheba, Barbados, 400 km (248.5 mi) E of Bridgetown, Barbados, 552 km (343 mi) E of Bisee, Saint Lucia and 556 km (345.5 mi) E of Castries, Saint Lucia. Initial estimates from the United States Geological Survey (USGS) located the epicentre of the event at 13.204° N, 55.927°W, and at a depth of 10 km (6.2 mi).

2 CCRIF MODEL OUTPUTS

Under CCRIF's loss calculation protocol, a CCRIF Multi-Peril Risk Estimation System (MPRES) report is required for any earthquake with a magnitude of greater than or equal to 5.0 that occurs within the region monitored by CCRIF. Based on the MPRES footprint for the earthquake on 20 April 2016, peak ground acceleration and loss estimation is zero for all CCRIF member countries.

3 IMPACTS

According to the Barbados Department of Emergency Management the earthquake was not felt in Barbados, the closest CCRIF member country to the event. No damage or injuries occurred in Barbados.

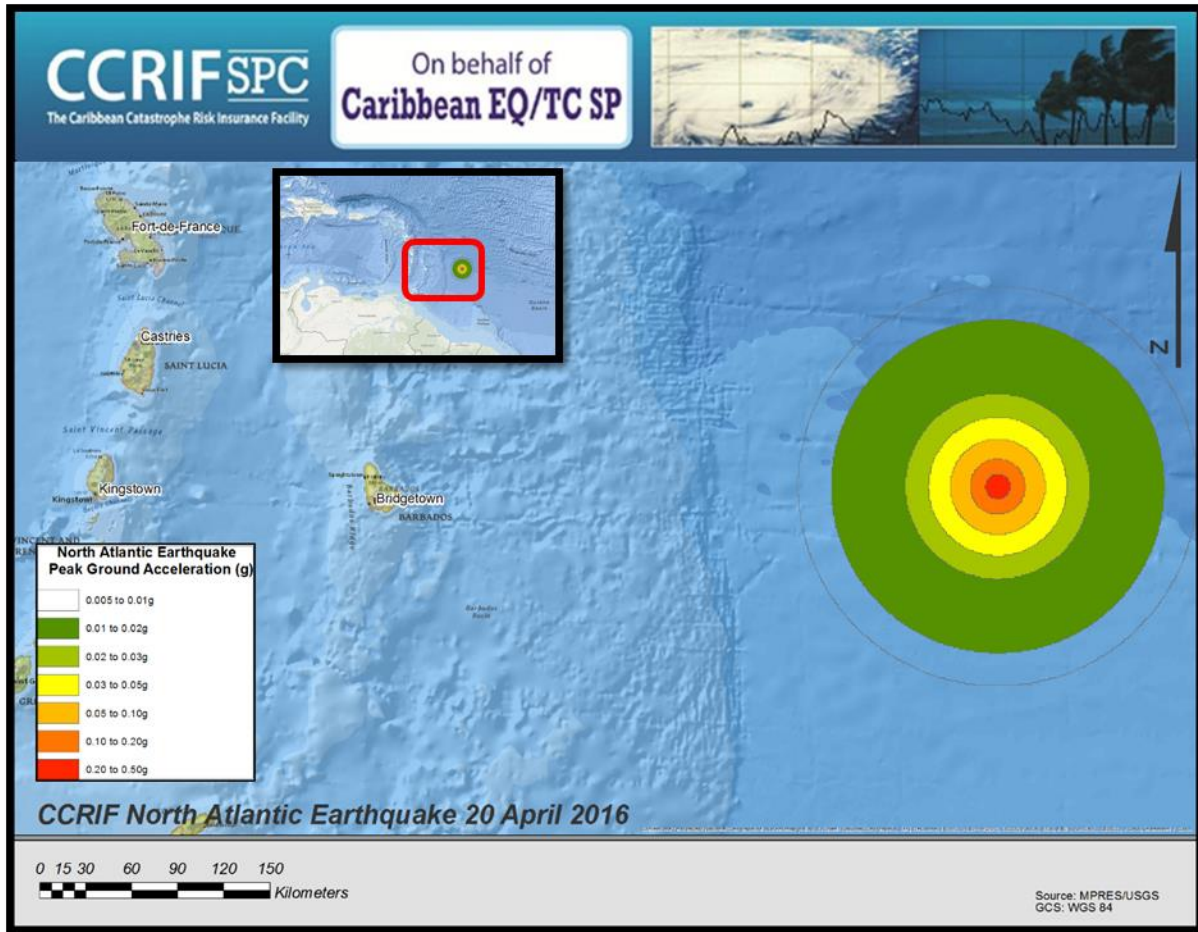


Figure 1: Map showing the peak ground acceleration following the magnitude 5.8 earthquake in east of Barbados on 20 April 2016. *Source: USGS & CCRIF KAC/MPRES*

For further information, please contact ERN-RED, the CCRIF SPC Risk Management Specialist.

Evaluación de Riesgos Naturales
Vito Alessio Robles No.179
Col. Hda Gpe Chimalistac.
Del. Álvaro Obregón. Cp 01050, México D.F.
+52 (55) 5616-8161, 62, 64
cavelar@ccrif.org