



Cayman Islands

Earthquake

10 January 2018

Event Briefing

10 January 2018

1 INTRODUCTION

A magnitude 7.6 earthquake occurred at 02:51:31 UTC on 10 January 2018, (21:51:31 on 9 January, local time and date), 201.9 km (125.5 mi) NNE of Barra Patuca, Honduras; 303.1 km (188.3 mi) SW of George Town, Cayman Islands and 305.7 km (190.0 mi) SW of West Bay, Cayman Islands. Initial estimates from the United States Geological Survey (USGS) located the epicentre of the event at 17.469°N, 83.520°W, and at a depth of 10.0 km (6.2 mi). According to CCRIF's Multi-Peril Risk Estimation System (MPRES) evaluation, the Cayman Islands was the only CCRIF member country where peak ground acceleration was greater than 0.01g for this earthquake.

2 CCRIF MODEL OUTPUTS

Under CCRIF's loss calculation protocol, an MPRES report is required for any earthquake with a magnitude of greater than or equal to 5.0 that occurs within the region monitored by CCRIF and which generates a peak ground acceleration of at least 0.01 g in one or more grid cells of at least one member country. Based on the MPRES footprint for this earthquake, peak ground acceleration between 0.01g and 0.02g was estimated in the Cayman Islands, for which the loss estimation was zero (Figure 1).

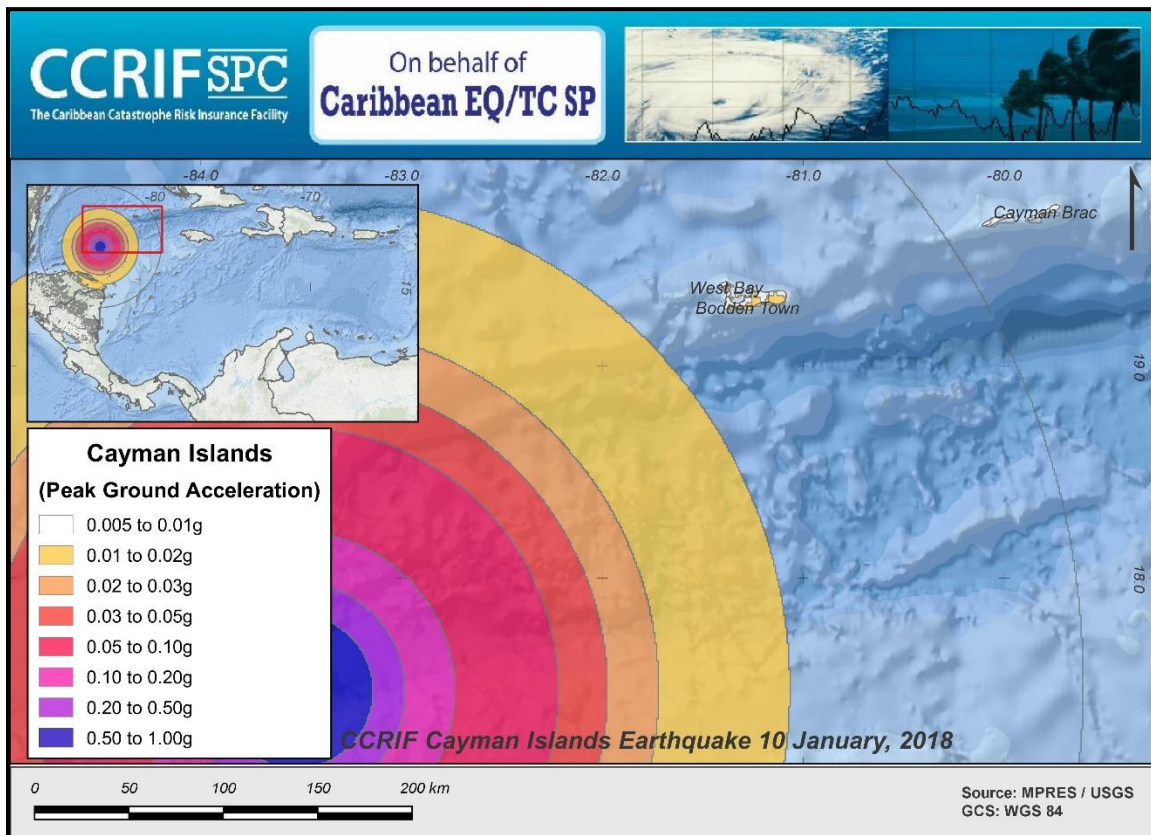


Figure 1 Map showing the peak ground acceleration in Cayman Islands following the magnitude 7.6 earthquake on 10 January 2018. Source: *USGS & CCRIF MPRES*.

3 IMPACTS

At the time of this report and according to Hazard Management Cayman Islands, the Cayman Islands' disaster management agency¹, no damage or injuries were reported due to this earthquake.

According to the USGS "Did You Feel It?" online tool², in the Cayman Islands within a radius of 320 km (198.8 mi) of the epicentre, 55 people reported the earthquake as a "weak shake with no damage" (Mercalli intensities: II-III).

4 TRIGGER POTENTIAL

Impact reports corroborate preliminary runs of CCRIF's loss model, which generated no government losses for the Cayman Islands, and therefore no payout is due.

For further information, please contact ERN-RED, the CCRIF SPC Risk Management Specialist.

Evaluación de Riesgos Naturales
Vito Alessio Robles No.179
Col. Hda Gpe Chimalistac.
Del. Álvaro Obregón. Cp 01050, México D.F.
+52 (55) 5616-8161, 62, 64
cavelar@ccrif.org

¹ Hazard Management Cayman Islands,
available at: <http://www.caymanprepared.ky/portal/page/portal/hmchome>

² Did You Feel It?, United States Geological Survey, review date: 10 January 2018, available at:
<https://earthquake.usgs.gov/earthquakes/eventpage/us1000c2zy#dyfi>
