



Nicaragua

Earthquake

24 April 2018

Event Briefing

25 April 2018

1 INTRODUCTION

A magnitude 5.6 earthquake occurred at 02:29:53 UTC on 24 April 2018, (20:29:53 on 23 April, local time and date), 41.1 km (25.6 mi) SW of Jiquilillo, Nicaragua; 68.7 km (42.7 mi) W of Chinandega, Nicaragua and 65.6 km (40.8 mi) WSW of El Viejo, Nicaragua. Initial estimates from the United States Geological Survey (USGS) located the epicentre of the event at 12.522°N, 87.754°W, at a depth of 47.0 km (29.2 mi). Nicaragua was the only CCRIF member country where peak ground acceleration was greater than 0.01g for this earthquake.

The earthquake was also reported by the Seismology Department of the Nicaraguan Institute of Territorial Studies¹ (in Spanish: Dirección de Sismología del Instituto Nicaragüense de Estudios Territoriales), with the following earthquake characteristics: epicentre coordinates – 12.367°N and 87.829°W, magnitude – 5.6 and depth – 20 km (12.4 mi).

2 CCRIF MODEL OUTPUTS

Under CCRIF’s loss calculation protocol, a Multi-Peril Risk Estimation System (MPRES) report is required for any earthquake with a magnitude of greater than or equal to 5.0 that occurs within the region monitored by CCRIF and which generates a peak ground acceleration of at least 0.01g in one or more grid cells of at least one member country. Based on the MPRES footprint for this earthquake, peak ground acceleration between 0.01g and 0.10g was estimated in the territory of Nicaragua, for which the loss estimation was zero (Figure 1).

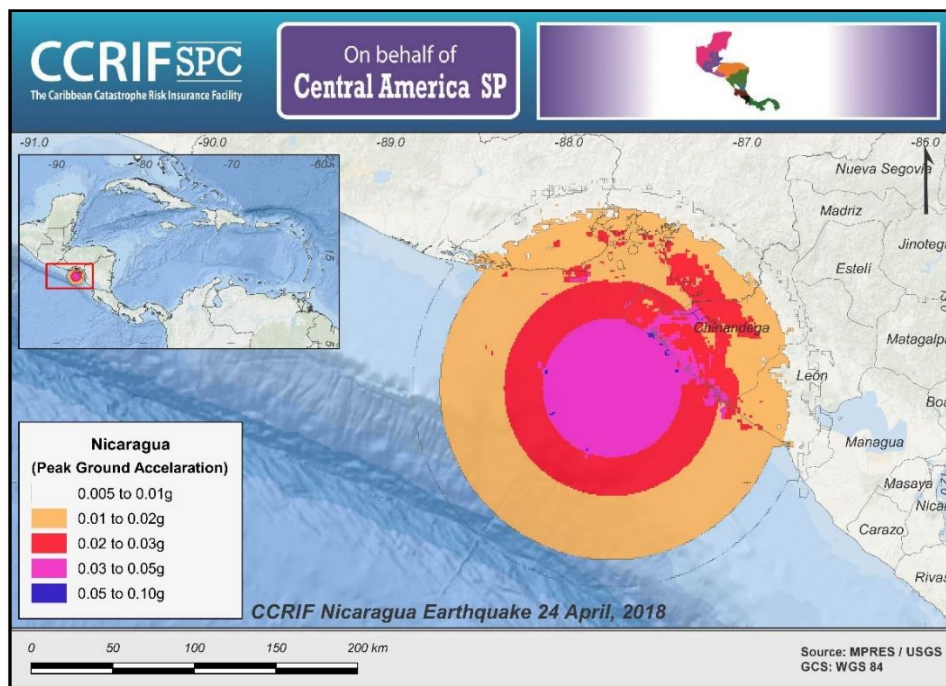


Figure 1 Map showing the peak ground acceleration in Nicaragua following the magnitude 5.6 earthquake on 24 April 2018. Source: *USGS & CCRIF MPRES*.

¹ INETER, review date: 25 April 2018, available at: <http://ineter.gob.ni/>

3 IMPACTS

According to Vice-President of the Republic of Nicaragua, Rosario Murillo, no damage or injuries were reported due to this earthquake. At the time of this report, information published in the regional media² reported that the earthquake was felt in El Salvador and Nicaragua.

According to the USGS “Did You Feel It?” online tool³, in Nicaragua within a radius of 184 km (114.3 mi) of the epicenter, 17 people reported the earthquake as a “weak shake with no damage” (Mercalli intensities: II-III) and another 2 people reported a “moderate shake with very light damage” (Mercalli intensity: V).

4 TRIGGER POTENTIAL

The minimal impact reported corroborates preliminary runs of CCRIF’s loss model that generated no government losses for Nicaragua, and therefore no payout is due.

For further information, please contact ERN-RED, the CCRIF SPC Risk Management Specialist.

Evaluación de Riesgos Naturales
Vito Alessio Robles No.179
Col. Hda Gpe Chimalistac.
Del. Álvaro Obregón. Cp 01050, México D.F.
+52 (55) 5616-8161, 62, 64
cavelar@ccrif.org

² Radio Rumba, review date: 24 April 2018, available at: <http://radiatorumba.fm/>

³ Did You Feel It?, United States Geological Survey, review date: 24 April 2018, available at: <https://earthquake.usgs.gov/earthquakes/eventpage/us1000dr32#dyfi>
