



# **Nicaragua**

## **Earthquake**

**30 January 2021**

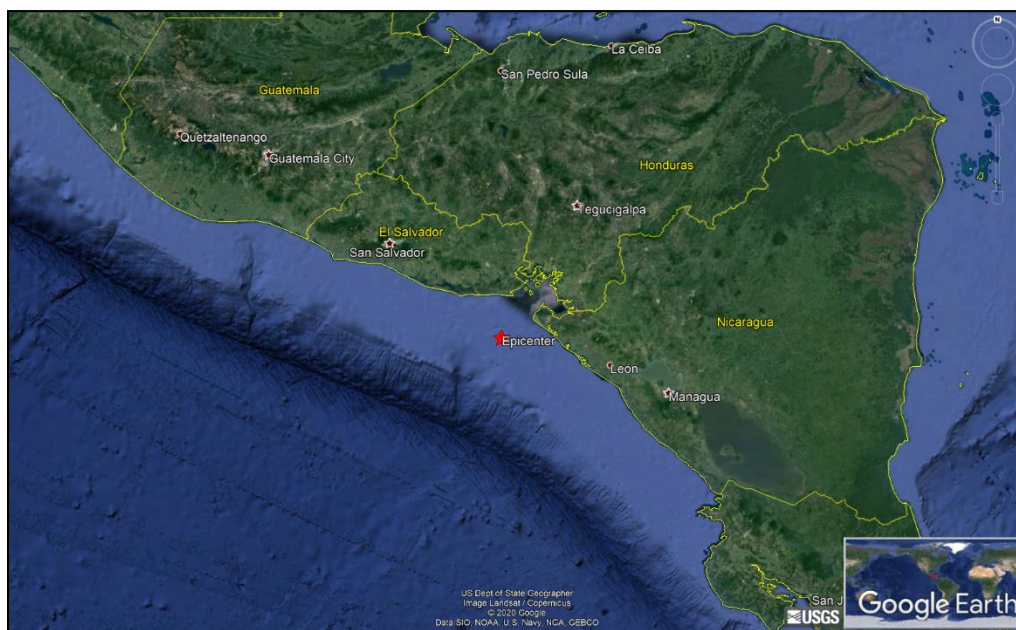
### **Final Event Briefing**

**10 February 2021**

## 1 INTRODUCTION

A magnitude 5.0 earthquake occurred at 05:35:28 UTC on 30 January 2021, 53.1 km (33 mi) S of Intipucá, El Salvador; 84.1 km (52.2 mi) SSE of Usulután, El Salvador and 97.7 km (60.7 mi) WNW of Chinandega, Nicaragua. Estimates from the United States Geological Survey (USGS) located the epicentre of the event at 12.721°N, 88.021°W, and at a depth of 68.5 km (42.6 mi – Figure 1). Nicaragua was the only CCRIF member country that was affected by the earthquake.

Final runs of CCRIF's loss model estimated no government losses for Nicaragua and therefore no payout is due.



**Figure 1** Information from the Earthquake Hazards Program of the United States Geological Survey regarding the earthquake event on 30 January 2021 at 05:35:28 UTC. Source: USGS<sup>1</sup>

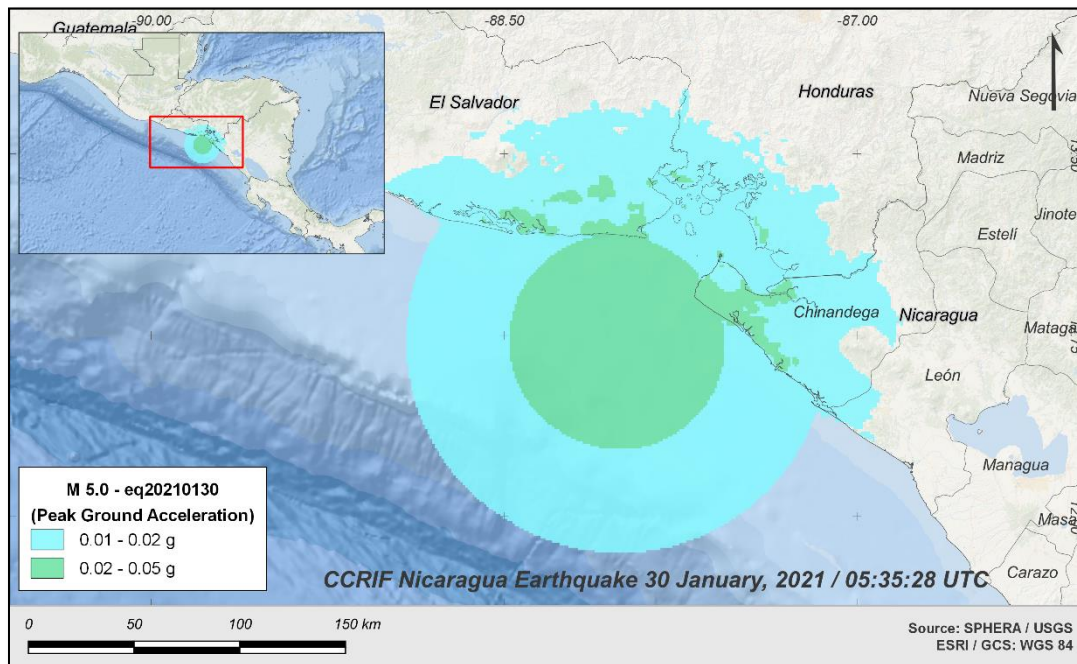
## 2 CCRIF MODEL OUTPUTS

Under CCRIF's loss calculation protocol, a report using the CCRIF System for Probabilistic Hazard Evaluation and Risk Assessment (SPHERA) is produced for any earthquake with a magnitude greater than or equal to 5.0 that occurs within the region monitored by CCRIF and which generates a peak ground acceleration of at least 0.01 g in one or more grid cells of at least one CCRIF member country. Based on the SPHERA footprint for this earthquake, peak ground acceleration of up to 0.05 g was estimated in Nicaragua (Figure 2), but under SPHERA the earthquake generated a loss estimation of zero.

---

<sup>1</sup> Download Event KML, United States Geological Survey, review date: 30 January 2021, available at: <https://earthquake.usgs.gov/earthquakes/eventpage/us6000dd68/executive>

---



**Figure 2** Map showing the peak ground acceleration in Nicaragua computed using SPHERA model following the magnitude 5.0 earthquake on 30 January at 05:35:28 UTC.

Source: *USGS & CCRIF SPHERA EQ Model.*

### 3 IMPACTS

Ten days after the earthquake's occurrence and according to information published in the local news<sup>2</sup>, due to this earthquake, no injuries or damage to infrastructure were reported.

According to the USGS “*Did You Feel It?*” online tool<sup>3</sup>, in Nicaragua within a radius of 116 km (72.1 mi) from the epicentre, only one person reported the earthquake as being a “moderate shake with very light damage” (Mercalli intensity: V).

### 4 TRIGGER POTENTIAL

Final runs of CCRIF's loss model generated no government losses for Nicaragua for this earthquake and therefore no payout is due under Nicaragua's CCRIF policy for earthquake.

For additional information, please contact CCRIF SPC at: [pr@ccrif.org](mailto:pr@ccrif.org)

---

<sup>2</sup> La Nueva Radio YA, review date: 31 January 2021, available at: <https://nuevaya.com.ni/>

<sup>3</sup> Did You Feel It?, United States Geological Survey, review date: 10 February 2021, available at: <https://earthquake.usgs.gov/earthquakes/eventpage/us6000dd68/dyfi/responses>

---