



Nicaragua

Earthquake

10 February 2021

Final Event Briefing

21 February 2021

1 INTRODUCTION

A magnitude 5.0 earthquake occurred at 08:47:40 UTC on 10 February 2021, 38.8 km (24.1 mi) SSW off Jucuarán, El Salvador; 39.8 km (24.7 mi) SSE off Puerto El Triunfo, El Salvador and 144.5 km (89.8 mi) WNW off Chinandega, Nicaragua. Estimates from the United States Geological Survey (USGS) located the epicentre of the event at 12.949°N, 88.420°W, and at a depth of 91.6 km (56.9 mi – Figure 1). Nicaragua was the only CCRIF member country that was affected by the earthquake.

Final runs of CCRIF’s loss model estimated no government losses for Nicaragua and therefore no payout is due.

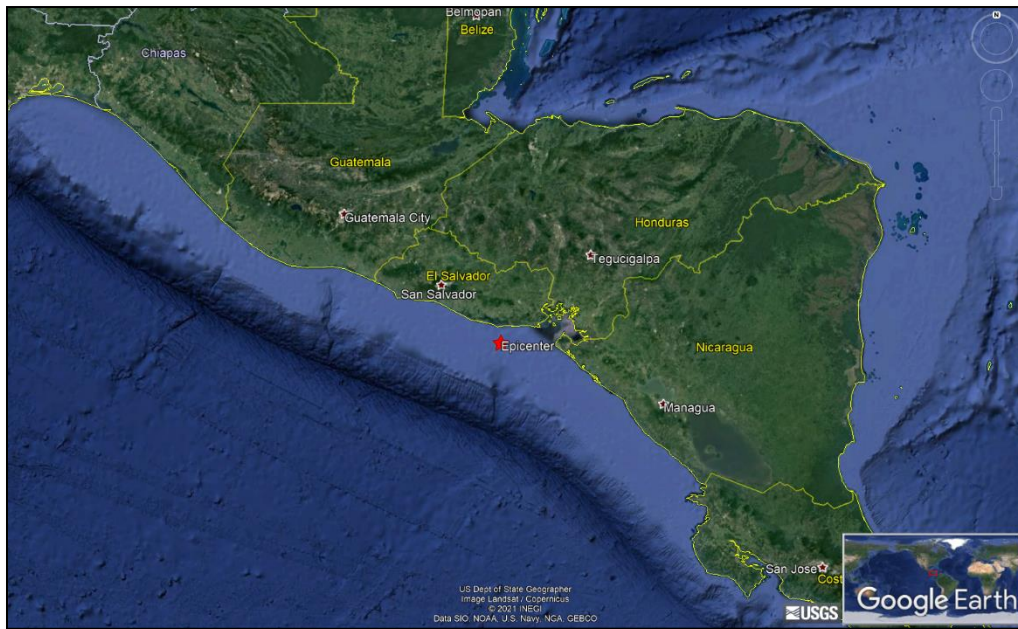


Figure 1 Information from the Earthquake Hazards Program of the United States Geological Survey regarding the earthquake event on 10 February 2021 at 08:47:40 UTC. Source: USGS¹

2 CCRIF MODEL OUTPUTS

Under CCRIF’s loss calculation protocol, a report using the CCRIF System for Probabilistic Hazard Evaluation and Risk Assessment (SPHERA) is produced for any earthquake with a magnitude greater than or equal to 5.0 that occurs within the region monitored by CCRIF and which generates a peak ground acceleration of at least 0.01 g in one or more grid cells of at least one CCRIF member country. Based on the SPHERA footprint for this earthquake, peak ground acceleration of up to 0.02 g was estimated in Nicaragua (Figure 2), but under SPHERA the earthquake generated a loss estimation of zero.

¹ Download Event KML, United States Geological Survey, review date: 11 February 2021, available at: <https://earthquake.usgs.gov/earthquakes/eventpage/us6000dg5d/executive>

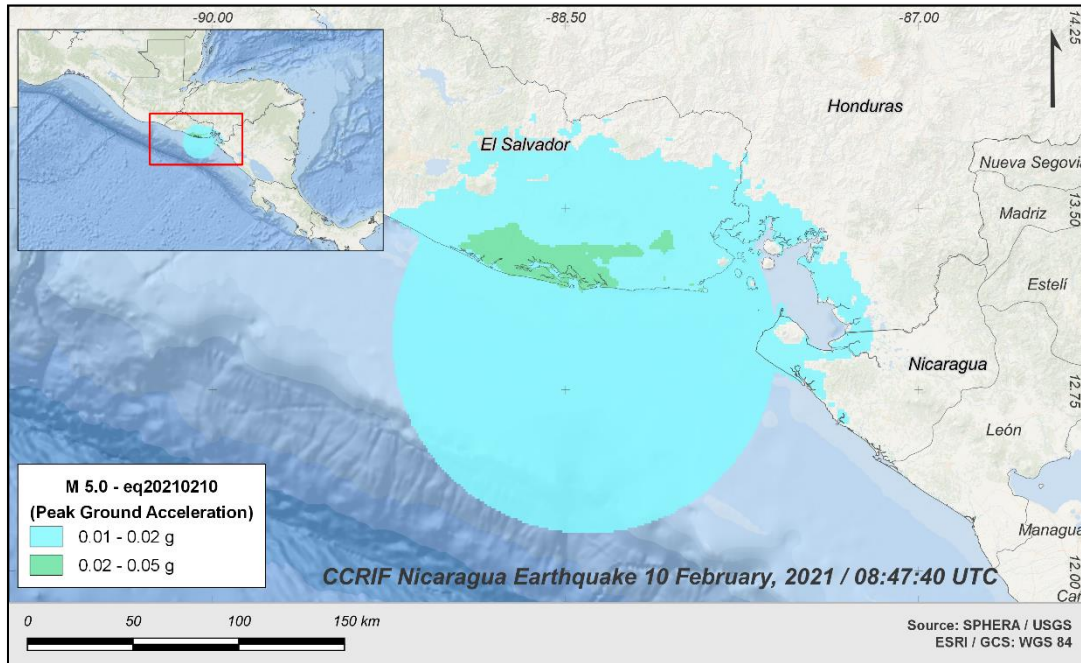


Figure 2 Map showing the peak ground acceleration in Nicaragua computed using SPHERA model following the magnitude 5.0 earthquake on 10 February at 08:47:40 UTC.

Source: *USGS & CCRIF SPHERA EQ Model.*

3 IMPACTS

Ten days after the earthquake's occurrence, no information was available related to damages or losses in Nicaragua due to this earthquake.

4 TRIGGER POTENTIAL

Final runs of CCRIF's loss model generated no government losses for Nicaragua for this earthquake and therefore no payout is due under Nicaragua's CCRIF policy for earthquake.

For additional information, please contact CCRIF SPC at: pr@ccrif.org