



Nicaragua

Earthquake

17 February 2022

Preliminary Event Briefing

18 February 2022

1 INTRODUCTION

A magnitude 5.2 earthquake occurred at 23:36:25 UTC on 17 February 2022, 51.1 km (31.7 mi) SSW of Chirilagua, El Salvador, 61.7 km (38.3 mi) SSE of Puerto El Triunfo, El Salvador and 130 km (80.8 mi) ESE of Chinandega, Nicaragua. Initial estimates from the United States Geological Survey (USGS) located the epicentre of the event at 12.788°N, 88.296°W, and at a depth of 68.8 km (42.7 mi – Figure 1).



Figure 1 Information from the Earthquake Hazards Program of the United States Geological Survey regarding the earthquake event on 17 February 2022 at 23:36:25 UTC. Source: USGS¹

Nicaragua was the only CCRIF member country where peak ground acceleration, computed with SPHERA model, was greater than 0.01 g for this earthquake.

Preliminary runs of CCRIF’s loss model estimated no government losses for Nicaragua and therefore no payout under the country’s earthquake policy is due.

2 CCRIF MODEL OUTPUTS

Under CCRIF’s loss calculation protocol, a report using the CCRIF SPHERA model is produced for any earthquake with a magnitude greater than or equal to 5.0 that occurs within the region monitored by CCRIF and which generates a peak ground acceleration of at least 0.01 g in one or more grid cells of at least one CCRIF member country. Based on the SPHERA footprint for this earthquake, peak ground acceleration of up to 0.024 g was estimated in Nicaragua (Figure 2), but under SPHERA, the earthquake generated a loss estimation of zero.

¹ Download Event KML, United States Geological Survey, review date: 17 February 2022, available at: <https://earthquake.usgs.gov/earthquakes/eventpage/us7000ghug/executive>

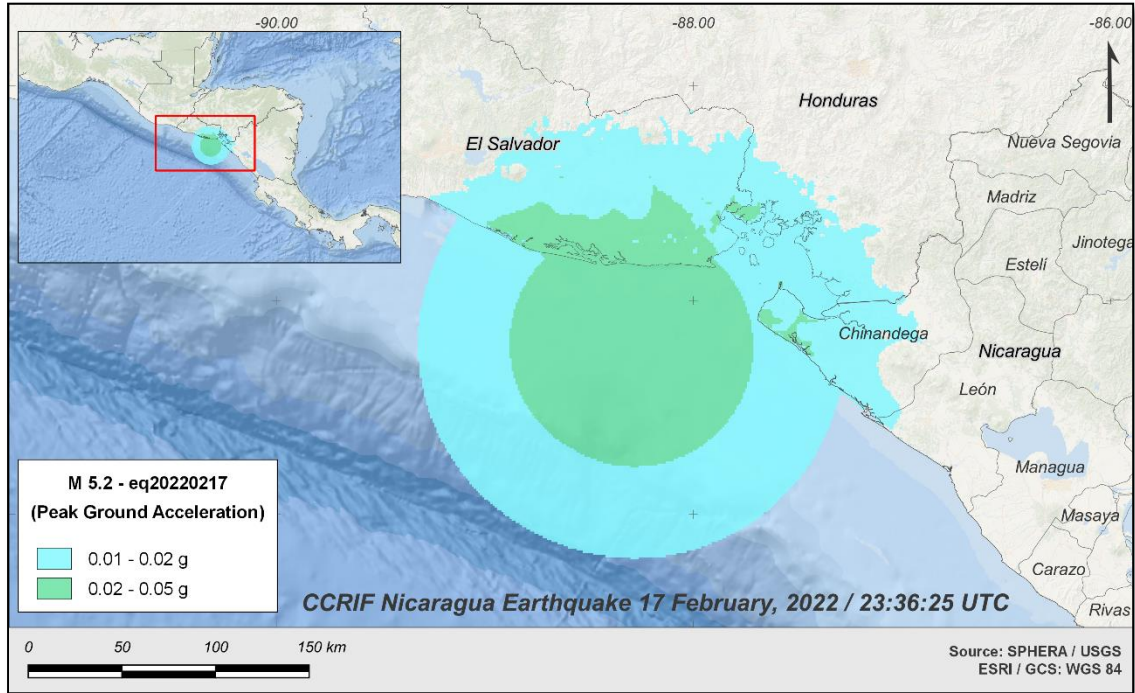


Figure 2 Map showing the peak ground acceleration in Nicaragua computed using SPHERA model following the magnitude 5.2 earthquake on 17 February at 23:36:25 UTC.
Source: *USGS & CCRIF SPHERA EQ Model.*

3 IMPACTS

At the time of writing this report, there was no available information on damage or loss in Nicaragua due to this earthquake.

According to the USGS “*Did You Feel It?*” online tool², 2 persons in Nicaragua within a radius of 241 km (150 mi) from the epicentre reported the magnitude 5.2 earthquake as being a “weak shake with no damage” (Mercalli intensity: II - III).

4 TRIGGER POTENTIAL

Preliminary runs of CCRIF’s loss model generated no government losses for Nicaragua for this earthquake and therefore no payout is due under the country’s CCRIF earthquake policy.

For additional information, please contact CCRIF SPC at: pr@ccrif.org

² Did You Feel It?, United States Geological Survey, review date: 18 February 2022, available at: <https://earthquake.usgs.gov/earthquakes/eventpage/us7000glug/dyfi/responses>