



Nicaragua

Earthquake

25 May 2022

Final Event Briefing

4 June 2022

1 INTRODUCTION

A magnitude 5.0 earthquake occurred at 18:58:38 (UTC) on 25 May 2022, 49.7 km (30.9 mi) ENE of Masachapa, Managua, Nicaragua; 60.3 km (37.5 mi) ENE of San Rafael del Sur, Managua, Nicaragua and 80.8 km (50.2 mi) NE of El Crucero, Managua, Nicaragua. Final estimates from the United States Geological Survey (USGS) located the epicentre of the event at 11.561°N, 86.908°W, and at a depth of 46.0 km (28.58 – Figure 1).



Figure 1 Information from the Earthquake Hazards Program of the United States Geological Survey regarding the earthquake event on 25 May 2022 at 18:58:38 UTC. Source: USGS¹

Nicaragua was the only CCRIF member country where peak ground acceleration, computed with the SPHERA model, was greater than 0.01 g for this earthquake.

Final runs of CCRIF’s loss model estimated no government losses for Nicaragua and therefore no payout under the country’s earthquake policy is due.

2 CCRIF MODEL OUTPUTS

Under CCRIF’s loss calculation protocol, a report using the CCRIF SPHERA model is produced for any earthquake with a magnitude greater than or equal to 5.0 that occurs within the region monitored by CCRIF and which generates a peak ground acceleration of at least 0.01 g in one or more grid cells of at least one CCRIF member country. Based on the SPHERA footprint for this earthquake, peak ground acceleration of up to 0.020 g was estimated in Nicaragua (Figure 2), but under SPHERA, the earthquake generated a loss estimation of zero.

¹ Download Event KML, United States Geological Survey, review date: 4 June 2022, available at: <https://earthquake.usgs.gov/earthquakes/eventpage/us7000hchh/executive>

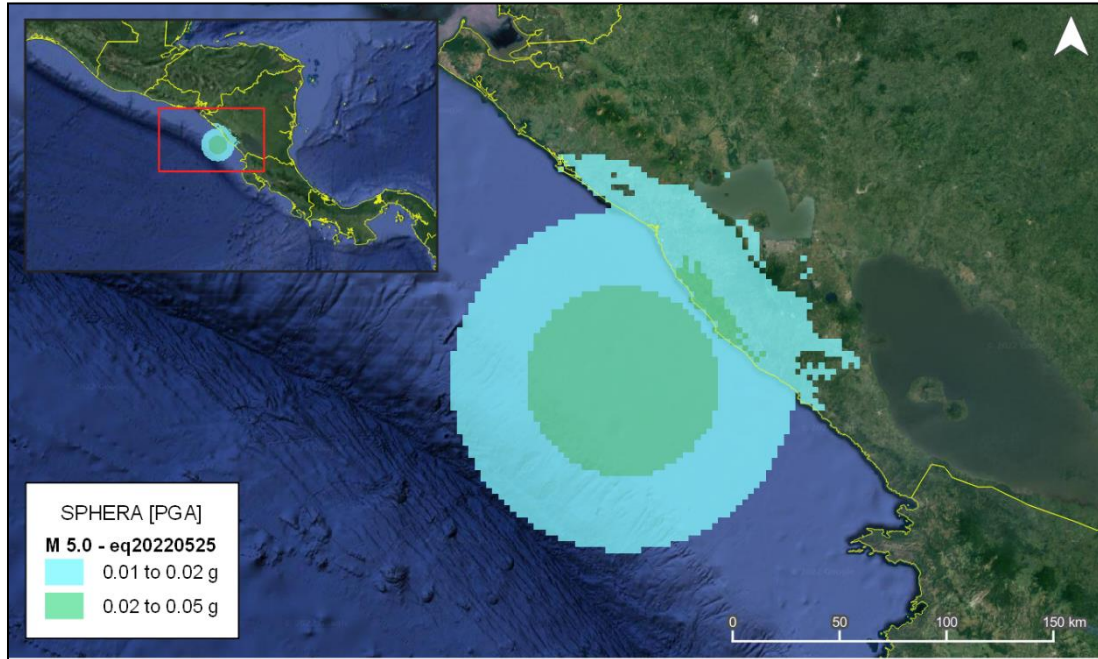


Figure 2 Map showing the peak ground acceleration in Nicaragua computed using SPHERA model following the magnitude 5.0 earthquake² on 25 May at 18:58:38 UTC.

Source: *USGS & CCRIF SPHERA EQ Model.*

3 IMPACTS

At the time of writing this report, there was no available information on damage or loss in Nicaragua due to this earthquake. According to information published in local media³, the earthquake was felt in different parts of the city of Managua and other parts of the department of Managua as well as other departments along the Pacific coast without causing casualties or material damage.

4 TRIGGER POTENTIAL

Final runs of CCRIF’s loss model generated no government losses for Nicaragua for this earthquake and therefore no payout is due under the country’s CCRIF earthquake policy.

For additional information, please contact CCRIF SPC at: pr@ccrif.org

² United States Geological Survey (USGS), review date: 4 June 2022, available at: <https://earthquake.usgs.gov/earthquakes/eventpage/us7000hchh/executive>

³ [Sismo de 5.1 de magnitud sacude el pacífico de Nicaragua \(articulo66.com\)](https://www.articulo66.com/sismo-de-5-1-de-magnitud-sacude-el-pacifico-de-nicaragua)
