



Nicaragua

Earthquake

30 September 2022

Final Event Briefing

10 October 2022

1 INTRODUCTION

A magnitude 5.2 earthquake occurred at 17:32:35 (UTC) on 30 September 2022, 128.3 km (79.7 mi) ENE of Corinto, Chinandega, Nicaragua and 108.8 km (67.6 mi) NNE of La Unión, El Salvador. Final estimates from the United States Geological Survey (USGS) located the epicentre of the event at 12.257°N, 88.331°W, and at a depth of 13 km (8.07 mi). – Figure 1.

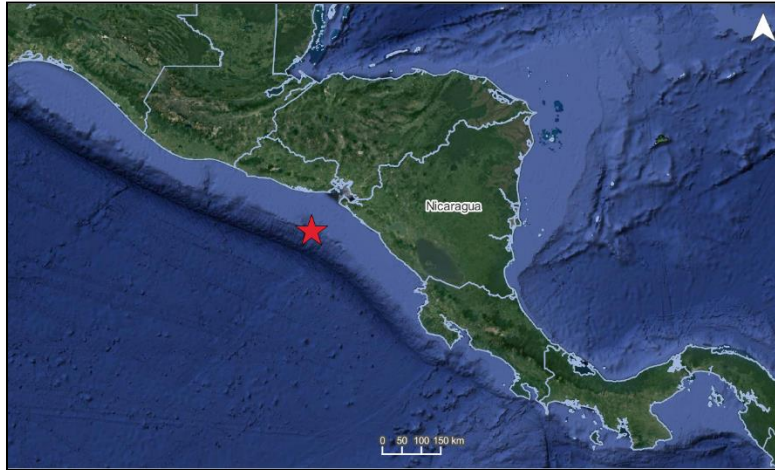


Figure 1 Information from the Earthquake Hazards Program of the United States Geological Survey regarding the earthquake event on 30 September 2022 at 17:32:35 (UTC). Source: USGS¹

Nicaragua was the only CCRIF member country where peak ground acceleration, computed with the SPHERA model, was greater than 0.01 g for this earthquake.

Final runs of CCRIF’s loss model estimated no government losses for Nicaragua and therefore no payout under the country’s earthquake policy is due.

2 CCRIF MODEL OUTPUTS

Under CCRIF’s loss calculation protocol, a report using the CCRIF SPHERA model is produced for any earthquake with a magnitude greater than or equal to 5.0 that occurs within the region monitored by CCRIF and which generates a peak ground acceleration of at least 0.01 g in one or more grid cells of at least one CCRIF member country. Based on the SPHERA footprint for this earthquake, peak ground acceleration of up to 0.050 g was estimated in Nicaragua (Figure 2), but under SPHERA, the earthquake generated a loss estimation of zero.

¹ Download Event KML, United States Geological Survey, review date: 10 October 2022, available at: [M 5.2 - 108 km SSW of Intipucá, El Salvador \(usgs.gov\)](https://www.usgs.gov/earthquake-hazard-program/central-america/2022/09/30/5.2-108-km-SSW-of-Intipucá-El-Salvador)

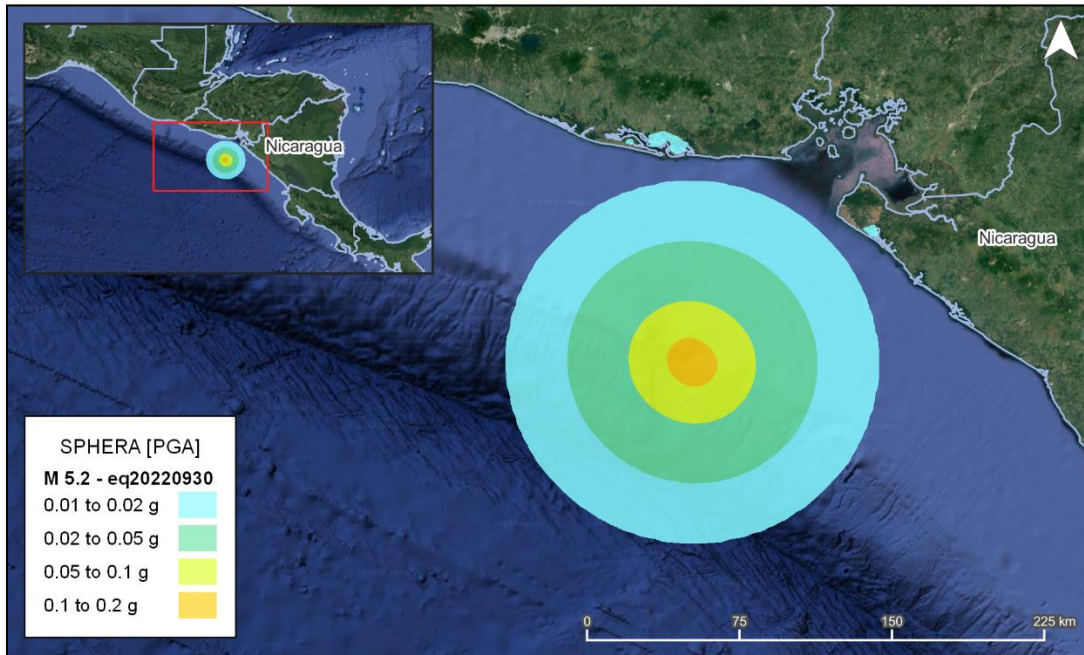


Figure 2 Map showing the peak ground acceleration in Nicaragua computed using SPHERA model following the magnitude 5.2 earthquake² on 30 September 2022 at 17:32:35 UTC
Source: *USGS & CCRIF SPHERA EQ Model.*

3 IMPACTS

At the time of writing this report, there was no available information on damage or loss in Nicaragua due to this earthquake.

4 TRIGGER POTENTIAL

Final runs of the CCRIF loss model for peak ground acceleration produced no government losses for Nicaragua. Therefore, no payout under this country's earthquake policy is due.

For additional information, please contact CCRIF SPC at: pr@ccrif.org

² United States Geological Survey (USGS), review date: 10 October 2022, available at: [M 5.2 - 108 km SSW of Intipucá, El Salvador \(usgs.gov\)](https://www.usgs.gov/locations/global/hazards/earthquake-hazards/magnitude-5.2-108-km-ssw-of-intipuca-el-salvador)
