



# Nicaragua

## Earthquake

**9 December 2024**

## Preliminary Event Briefing

**9 December 2024**

## 1 INTRODUCTION

A magnitude 5.6 earthquake occurred at 03:50:29 (UTC) on 9 December 2024, located at 54.45 km (33.83 mi) SE of Cosiguina, Nicaragua; 9.8 km (6.1 mi) N of Conchagua, La Unión, El Salvador and 13.4 km (8.3 mi) NNE of La Unión, La Unión, El Salvador. Initial estimates from the United States Geological Survey (USGS) located the epicentre of the event at 13.221°N, 87.875°W, and at a depth of 15.4 km (9.57 mi). – Figure 1.

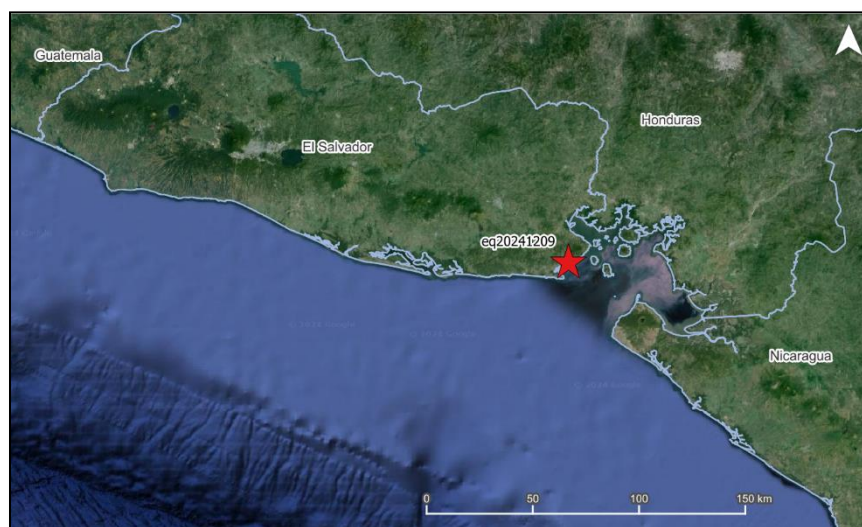


Figure 1 Information from the Earthquake Hazards Program of the United States Geological Survey regarding the earthquake event on 9 December 2024. Source: USGS<sup>1</sup>

Nicaragua was the only CCRIF member country where peak ground acceleration, computed with the SPHERA model, was greater than 0.03 g for this earthquake.

Preliminary runs of CCRIF's loss model estimated no government losses for Nicaragua and therefore no payout is due under the earthquake policy.

## 2 CCRIF MODEL OUTPUTS

Under CCRIF's loss calculation protocol, a report using the CCRIF SPHERA model is produced for any earthquake with a magnitude greater than or equal to 5.0 that occurs within the region monitored by CCRIF and which generates a peak ground acceleration of at least 0.03 g in one or more grid cells of at least one CCRIF member country. Based on the SPHERA footprint for this earthquake, peak ground acceleration of up to 0.1 g was estimated in Nicaragua (Figure 2), but under the SPHERA model, the earthquake generated a loss estimation of zero.

---

<sup>1</sup> Download Event KML, United States Geological Survey, review date: 9 December 2024, available at: <https://earthquake.usgs.gov/earthquakes/feed/v1.0/detail/us7000nx79.kml>

---

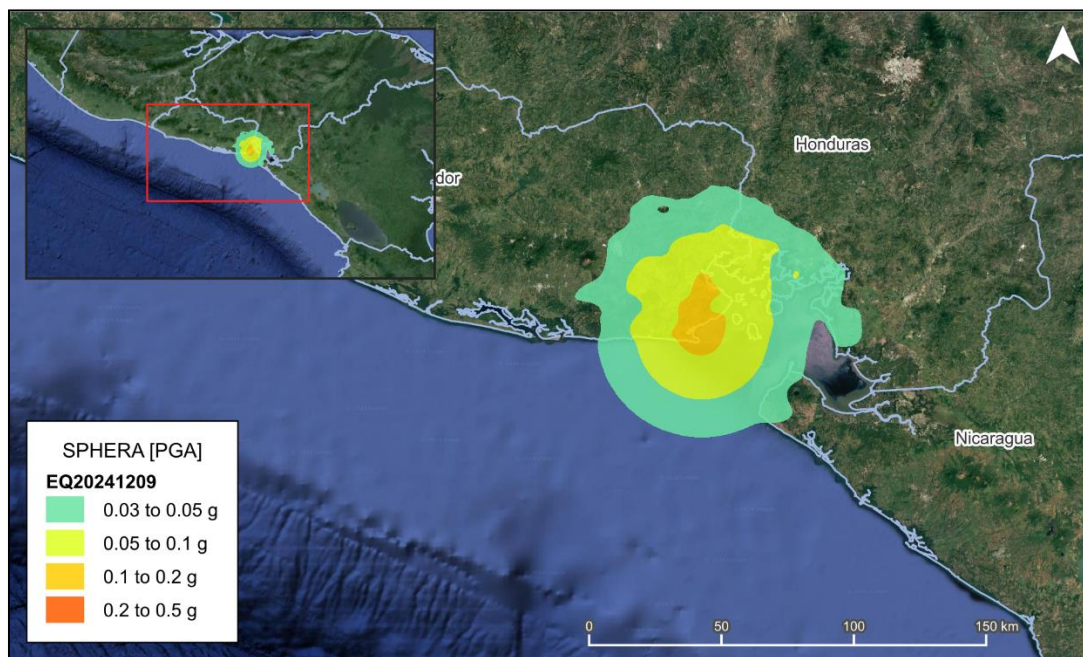


Figure 2 Map showing the peak ground acceleration in Nicaragua computed using the SPHERA model following the magnitude 5.6 earthquake<sup>2</sup> on 9 December 2024  
Source: USGS & CCRIF SPHERA EQ Model.

### 3 IMPACTS

At the time of writing this report, there was no available information on damage or loss in Nicaragua due to this earthquake.

According to the USGS “Did You Feel It?” online tool no one reported feeling this earthquake.

### 4 TRIGGER POTENTIAL

Preliminary runs of the CCRIF loss model for peak ground acceleration estimated no government losses for Nicaragua. Therefore, no payout is due under this country’s earthquake policy.

For additional information, please contact CCRIF SPC at: [pr@ccrif.org](mailto:pr@ccrif.org)

---

<sup>2</sup> United States Geological Survey (USGS), review date: 9 December 2024, available at: [M 5.6 - 9 km S of Conchagua, El Salvador](#)

---